

Body Components - General Equipment

Bolt-on Stayfast Latches

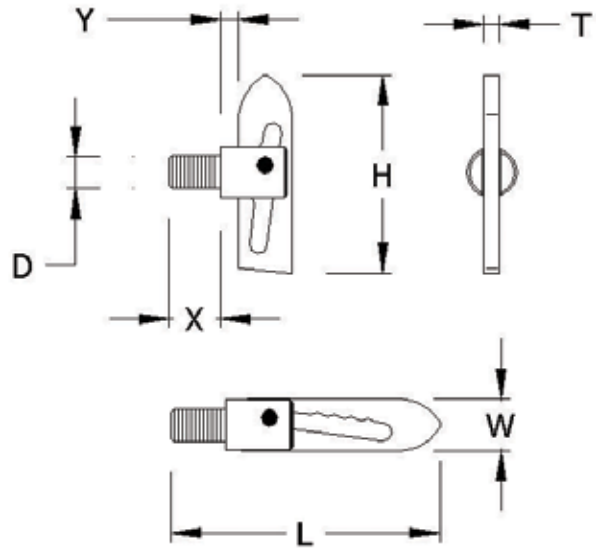
Amended 14.04.10

Manufactured in High Grade Machine Steel

Supplied in various sizes

'A' Suffix represents complete with Nut & Washer

V73025



V73076A

Product Reference	L	W	H	T	D	X	Y	Mass Kgs
V73025	104	19.5	72	6	M12 x 1.75	25	6.8	0.09
V73025A	104	19.5	72	6	M12 x 1.75	25	6.8	0.09
V73034	114	19.5	72	6	M12 x 1.75	34	6.8	0.1
V73034A	114	19.5	72	6	M12 x 1.75	34	6.8	0.1
V73038	95	12.5	50	4	M8 x 1.25	38	6.8	0.04
V73076A	155	19.5	72	6	M12 x 1.75	76	6.8	0.12