

# Body Components - General Equipment

## Lashing Fork

Amended 14.04.10

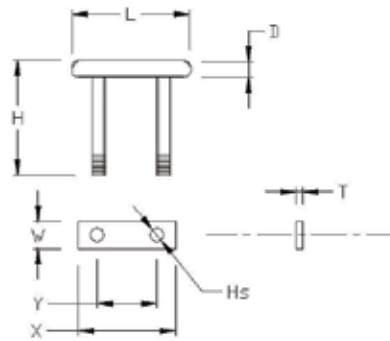
### Rave Drop Down Lashing Fork

Manufactured in forged steel

Designed to be secured within side raves with a 'V' profile

Supplied complete with backing plate and M12 nyloc nuts

SWL: 2.5 tonnes



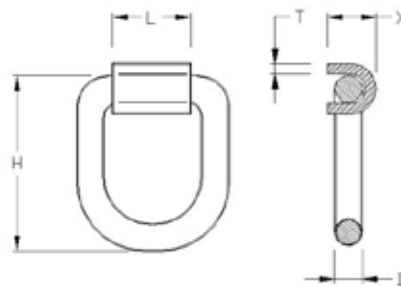
Product Reference	L	W	H	T	D	Hs	X	Y	Mass Kgs
-------------------	---	---	---	---	---	----	---	---	----------

V242029	105	25	115	6	15	13	90	55	0.44
---------	-----	----	-----	---	----	----	----	----	------

## D Shackles

### Ferry Ring Assemblies

EN19 Steel Forged Ferry Ring and 'C' Staple SWL. Supplied Finish: Natural



Product Reference	L	H	T	D	X	Mass Kgs
-------------------	---	---	---	---	---	----------

V233043	75	135	10	20	38	1.35
---------	----	-----	----	----	----	------

V233060	75	150	12	23	43	1.90
---------	----	-----	----	----	----	------

V233061	75	165	15	26	48	2.20
---------	----	-----	----	----	----	------

**Phone: 01474 321954 Fax 01474 321988**