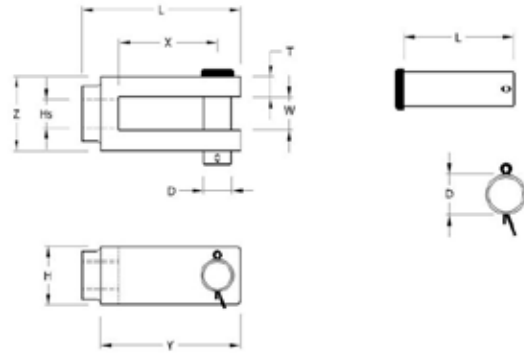
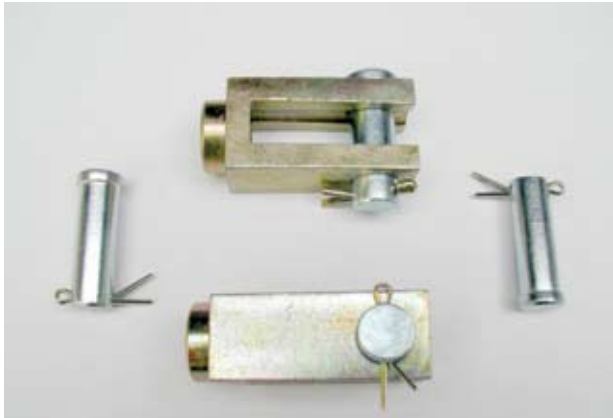


Chassis Components - General Equipment

Clevis Fork and Pin Assemblies

Amended 14.04.10

A range of fully hardened machine steel Clevis Forks and Pins designed to be used in all types of commercial brake actuator applications. All components are surface treated in Zinc and Yellow clear passivate to BS1706 and case hardened. Threads are unified in accordance to class 2B for imperial version and 6H for Metric types.



Product Reference	L	W	D	H	Hs	T	X	Y	Kgs
V31004	65	14.5	1/2"	25	5/8" UNF	8.5	41	57	0.26
V31107	65	14.5	1/2"	25	M16 x 1.5	8.5	41	57	0.26
V31008 (pkt 10)	42.5		1/2"						0.05
V31109	65	14.5	1/2"	25	M16 x 1.5	8.5	41	57	0.26
V31113 (pkt 10)	42.5		14mm						0.06
V31276	84	14.5	14mm	25	M16 x 1.5	8.5	55	76	0.32
V31306	42.5		16mm						0.07
V31329	65	14.5	16mm	25	M16 x 1.5	8.5	41	57	0.26

Phone: 01474 321954 Fax 01474 321988