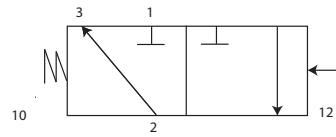


Valves - General Equipment

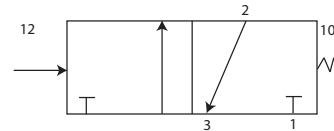
3/2 Valves

Amended 14.04.10



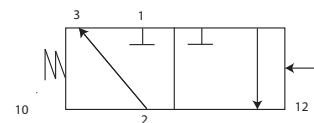
Part No VAL605 - (030601M2)
Description 3/2 Pilot Spring Valve
Main Threads M14 x 3
Pilot Thread M10 x 1
Bar 2-10
Working Temp +5 to +70C Max

VAL604 - (03060102)
3/2 Pilot Spring Valve
1/4 BSP x 3
1/8 BSP x 1
2-10
+5 to +70C Max



Part No VAL606 - (SPGB/26272)
Description 3/2 Pilot Spring Valve
Main Threads M14 x 3
Pilot Thread M10
Bar 2 to 10
Working Temp 0 to 80C Max

VAL686 - (03041302)
3/2 2 Bar Pilot Spring Valve
1/8 BSP x 3
1/8 BSP x 1
0 to 10
0 to 70C Max



Part No VAL603 - (03040102)
Description 3/2 Pilot Spring Valve
Main Threads 1/8 BSP x 3
Pilot Thread 1/8 BSP x 1
Bar 0-10
Working Temp 0 to +70C Max

VAL647 - (SPGB/35004)
3/2 4Bar Pilot Spring Valve
1/4 BSP x 3
1/8 BSP x 1
4-10
0-70C Max

VAL655-(SPGB/36003)
3/2 2Bar Pilot Spring Valve
1/4 BSP x 3
1/8 BSP x 1
0-10
0-70C Max

Product Codes and Part Numbers of manufacturers or suppliers that are other than TGL numbers are only quoted for reference and identification and do not suggest part origins or manufacturer.

Phone: 01474 321954 Fax 01474 321988