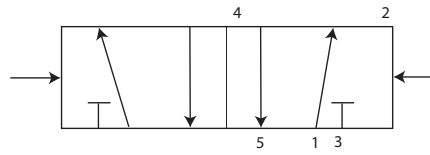


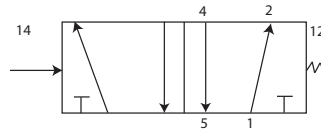
# Valves - General Equipment

## 5/2 Valves

Amended 14.04.10



**Part No** VAL609 - (X3044702)  
**Description** 5/2 Pilot Valve  
**Main Threads** 1/8 BSP x 5  
**Pilot Thread** 1/8 BSP x 2  
**Bar** 0-10  
**Working Temp** 0 to +70C Max



**Part No** VAL642 - (V60A5D7A - X5090)  
**Description** 5/2 Pilot Spring Valve  
**Main Threads** 1/8 BSP x 5  
**Pilot Thread** M5  
**Bar** -0.9 to 10  
**Working Temp** -10 to 50C Max

Product Codes and Part Numbers of manufacturers or suppliers that are other than TGL numbers are only quoted for reference and identification and do not suggest part origins or manufacturer.

**Phone: 01474 321954 Fax 01474 321988**

# Valves - General Equipment

## 5/2 Valves

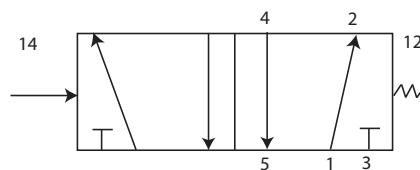
Amended 14.04.10

**Picture  
Pending**

**Part No** VAL696 - (X3064102)  
**Description** 5/2 Pilot Spring Valve  
**Main Threads** 1/4 BSP x 5  
**Pilot Thread** 1/8 BSP x 1  
**Bar**  
**Working Temp**

**Picture  
Pending**

**Part No** VAL676 - (V51B5D7A-XA090)  
**Description** 5/2 Pilot Spring Valve  
**Main Threads** 1/4 BSP x 5  
**Pilot Thread** Internal???  
**Bar**  
**Working Temp**



**Part No** VAL644 - (V61B5D7A-X5090)  
**Description** 5/2 Pilot Spring Valve  
**Main Threads** 1/4 BSP x 5  
**Pilot Thread** M5  
**Bar** -0.9 to 10  
**Working Temp** -10 to 50C Max

**VAL644A - (V61B5D7A-XA090)**  
**5/2 Pilot Spring Valve**  
**1/4 BSP x 5**  
**1/8 BSP**  
**-0.9 to 10**  
**-10 to 50C Max**

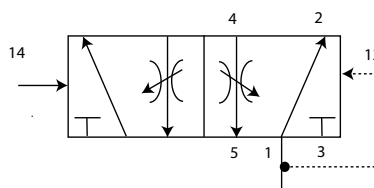
Product Codes and Part Numbers of manufacturers or suppliers that are other than TGL numbers are only quoted for reference and identification and do not suggest part origins or manufacturer.

**Phone: 01474 321954 Fax 01474 321988**

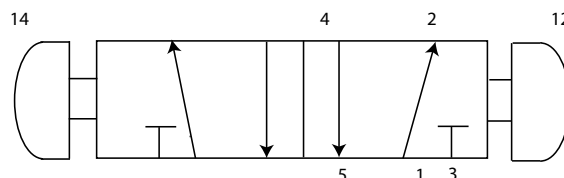
# Valves - General Equipment

## 5/2 Valves

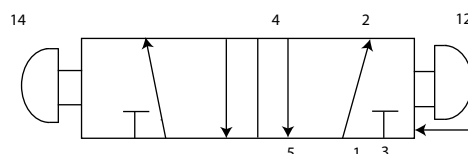
Amended 14.04.10



<b>Part No</b>	VAL664 - (5717400000)
<b>Descriptions</b>	5/2 Pilot Poppet Valve
<b>Port Connections</b>	8 x 1 Tube Input, output & pilot - M14 x 1 exhaust
<b>Bar</b>	1.5 - 10
<b>Working Temp</b>	-15 to 60C



<b>Part No</b>	VAL610 - (X3046502)
<b>Description</b>	5/2 Push/Pull Valve
<b>Main Threads</b>	1/8 BSP x 5
<b>Bar</b>	2-10
<b>Working Temp</b>	0 to +70C Max



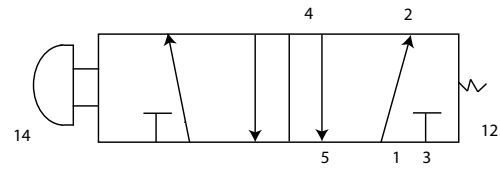
<b>Part No</b>	VAL678 - (X3046402)
<b>Description</b>	5/2 Push/Pull or Pilot Valve
<b>Main Threads</b>	1/8 BSP x 5
<b>Pilot Thread</b>	1/8 BSP x 1
<b>Bar</b>	2-10
<b>Working Temp</b>	0 to 70C Max

Product Codes and Part Numbers of manufacturers or suppliers that are other than TGL numbers are only quoted for reference and identification and do not suggest part origins or manufacturer.

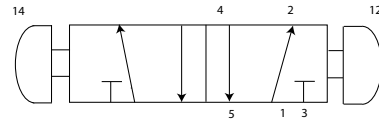
# Valves - General Equipment

## 5/2 Valves

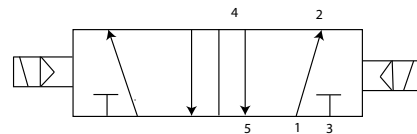
Amended 14.04.10



**Part No** VAL695 - (X3045502)  
**Description** 5/2 Push Button/Spring Valve (Green)  
**Main Threads** 1/8 BSP x 5  
**Bar** 2-10  
**Working Temp** 0 to 70C Max



**Part No** VAL608 - (X3066502)  
**Description** 5/2 Push/Pull Valve  
**Main Threads** 1/4 BSP x 5  
**Bar** 2-10  
**Working Temp** 0 to +70C Max



**Part No** VAL614 - (M/20154/MAZ/02400)  
**Description** 5/2 Sol - Sol with 24V Coils D.C.  
**Main Threads** 1/2 BSP x 5  
**Bar** 2.8 - 10  
**Working Temp** +5 to +50C Max

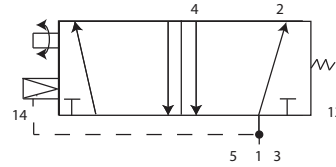
Product Codes and Part Numbers of manufacturers or suppliers that are other than TGL numbers are only quoted for reference and identification and do not suggest part origins or manufacturer.

**Phone: 01474 321954 Fax 01474 321988**

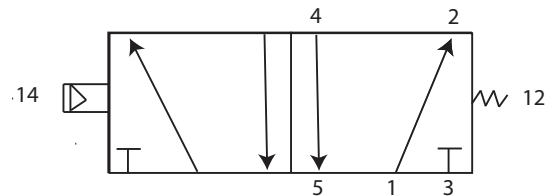
# Valves - General Equipment

## 5/2 Valves

Amended 14.04.10

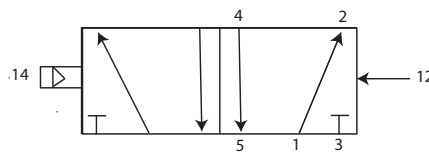


**Part No** VAL650 - (X4215500000)  
**Description** 5/2 Solenoid/Spring Valve  
**Threads** 1/4 BSP x 5  
**Bar** 2 - 10  
**Working Temp** 50°C Max



**Part No** VAL662 - (V61B517A - A313J)  
**Description** 5/2 Solenoid/Spring Valve  
**Threads** 1/4 BSP x 5  
**Bar** 3-10  
**Working Temp** -10C to 50C

**Picture Pending**



**Part No** VAL683- (V61B513A-A213L)  
**Description** 5/2 Solenoid Pilot Valve  
**Threads** 1/4 BSP x 5 (Internal Pilot)  
**Bar** 2-8  
**Working Temp** -10 to 50C

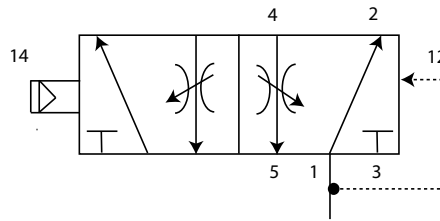
**VAL683A-** (V61B513A-A2000)  
 Without Solenoid

Product Codes and Part Numbers of manufacturers or suppliers that are other than TGL numbers are only quoted for reference and identification and do not suggest part origins or manufacturer.

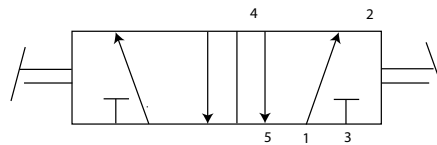
# Valves - General Equipment

## 5/2 Valves

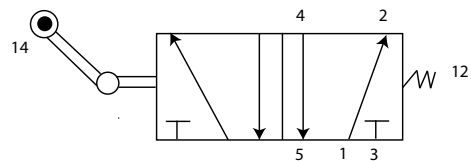
Amended 14.04.10



<b>Part No</b>	VAL663 - (5727450220)
<b>Description</b>	5/2 Solenoid Poppet Valve 24V DC with manual override
<b>Port Connections</b>	10 x 1 Tube Input, output - M14 x 1 exhaust
<b>Bar</b>	1.5 - 10
<b>Working Temp</b>	-15C to 50C



<b>Part No</b>	VAL611 - (X3044302)
<b>Description</b>	5/2 Toggle/Toggle Valve
<b>Threads</b>	1/8 BSP x 5
<b>Bar</b>	2-10
<b>Working Temp</b>	0 to +70C Max



<b>Part No</b>	VAL612 - (X3045102)
<b>Description</b>	5/2 Mechanical Valve Roller Lever
<b>Threads</b>	1/8 BSP x 5
<b>Bar</b>	2-10
<b>Working Temp</b>	0 to +70C Max

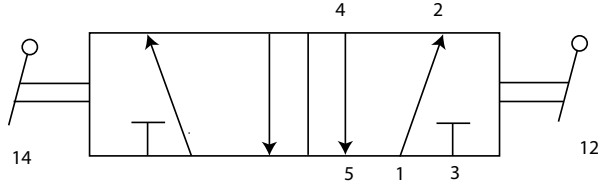
<b>Part No</b>	VAL654 - (X3039302)
<b>Description</b>	5/2 Roller Lever (HD)/Spring
<b>Threads</b>	1/8 BSP x 5
<b>Bar</b>	2-10
<b>Working Temp</b>	0 to 80C Max

Product Codes and Part Numbers of manufacturers or suppliers that are other than TGL numbers are only quoted for reference and identification and do not suggest part origins or manufacturer.

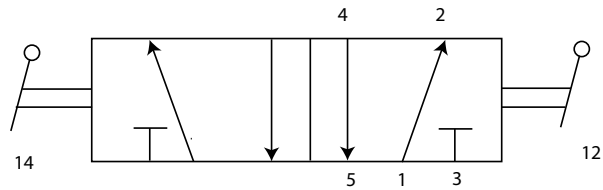
# Valves - General Equipment

## 5/2 Valves

Amended 14.04.10



**Part No** VAL684 - (X3067702)  
**Description** 5/2 Lever/Lever Valve  
**Threads** 1/4 BSP x 5  
**Bar** 2-10  
**Working Temp** 0 to 70C



**Part No** VAL694 - (SPGB/31759/1)  
**Description** 5/2 Lever/Lever Valve  
**Threads** 1/4 BSP x 5  
**Bar** 0-10  
**Working Temp** 0 to 80C

Product Codes and Part Numbers of manufacturers or suppliers that are other than TGL numbers are only quoted for reference and identification and do not suggest part origins or manufacturer.

**Phone: 01474 321954 Fax 01474 321988**