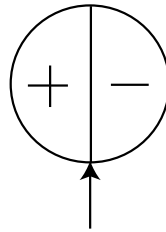


# Valves - General Equipment

## Rota Wink Valves

Amended 14.04.10



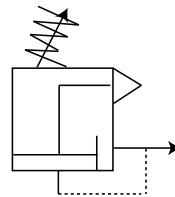
**Part No** VAL619 - (5VS-421-800)  
**Description** Rota Wink Valve  
 off Green/on Red  
**Main Threads** 1/8 BSP  
**Bar** 0.7 to 8 Max  
**Working Temp** 2 to +66C Max

**Part No** VAL618 - (5VS-412-800)  
**Description** Rota Wink Valve  
 off Red/on Green  
**Main Threads** 1/8 BSP  
**Bar** 0.7 to 8 Max  
**Working Temp** 2 to +66C Max



**Part No** VAL613 - (5VS-401-800)  
**Description** Rota Wink Valve  
 off Black/on Red  
**Main Threads** 1/8 BSP  
**Bar** 0.7 to 8 Max  
**Working Temp** 2 to +66C Max

## Other Valves

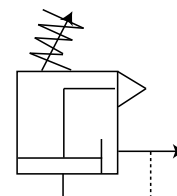


**Part No** VAL623 - (R73G-2GK-RMN)  
**Description** Pressure Regulator (Relieving)  
**Main Threads** 1/4 BSP x 2  
**Gauge Threads** 1/8 BSP x 2  
**Bar** 0 - 20 inlet, 0.3-10 outlet  
**Working Temp** -34C to +80C

**Part No** VAL690 - (R72G-2GK-RMN)  
**Description** Pressure Regulator (Relieving)  
**Main Threads** 1/4 BSP x 2  
**Gauge Threads** 1/8 BSP x 2  
**Bar** 0 - 20 inlet, 0.3-10 outlet  
**Working Temp** -34C to +65C



**Part No** VAL657 - (R07-200-RNKG)  
**Description** Pressure Regulator (Relieving)  
**Main Threads** 1/4 BSP x 2  
**Gauge** 1/8 BSP x 2  
**Bar** 0 - 20 inlet, 0.3 - 7 outlet  
**Working Temp** -34C to +65C



Product Codes and Part Numbers of manufacturers or suppliers that are other than TGL numbers are only quoted for reference and identification and do not suggest part origins or manufacturer.

**Phone: 01474 321954 Fax 01474 321988**

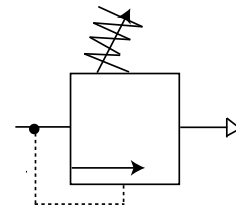
# Valves - General Equipment

## Other Valves

Amended 14.04.10



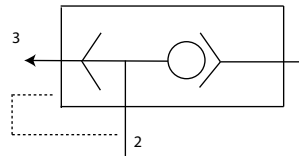
**Part No** VAL667 - (V07-200-NNLG)  
**Description** G 1/4" Pressure Relief Valve  
**Main Threads** 1/4 BSP x 2  
**Gauge Threads** 1/8 BSPT x 2  
**Bar** 8.6  
**Working Temp** 65C Max



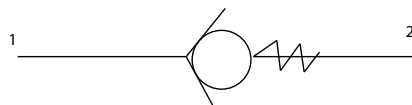
Accessories: 40mm dia - 10 bar Gauge - Part No Z0119  
 Bracket Kit - Part No Z2204



**Part No** VAL624 - (T70C3800)  
**Description** Quick Exhaust Valve  
**Threads** 3/8 BSP x 2  
**Bar** 0.5 - 10  
**Working Temp** -20C to +80C



**Part No** VAL648 - (T50P0008)  
**Description** 8mm O/D Non-Return Valve  
**Bar** 16 Max  
**Working Temp** 80C Max



VAL656 - (T50P0010)  
 10mm O/D Non-Return Valve  
 16 Max  
 80C Max

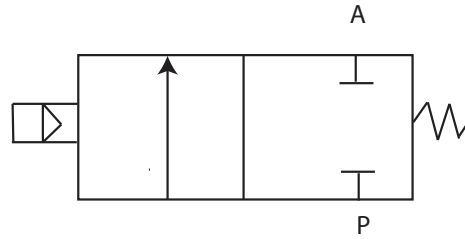
Product Codes and Part Numbers of manufacturers or suppliers that are other than TGL numbers are only quoted for reference and identification and do not suggest part origins or manufacturer.

# Valves - General Equipment

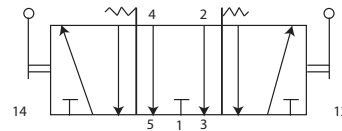
## Other Valves

**Picture  
Pending**

Amended 14.04.10



**Part No** VAL674 - (8240000.9101.02400)  
**Description** 2/2 24V Solenoid Spring Diaphragm Valve  
**Threads** 1/4 BSP x 2  
**Bar** 0.1 - 16  
**Working Temp** -10C to 50C



**Part No** VAL649 - (SLV02298)  
**Description** 5/3 Valve  
**Thread** 1/8 BSP x 5  
**Bar** 2 to 10  
**Working Temp** 0 to 70C Max

**VAL673 - (X3367702)**  
**5/3 Lever Lever Valve**  
**1/4 BSP x 5**  
**2 to 10**  
**0 to 70C Max**



**Part No** VAL652 - (QM48/83J/28)  
**Description** Coil Assembly 24V DC  
**Power** 6.0 W  
**Current** 0.25A



**VAL685 - (QM48/13J/21)**  
**Coil Assembly 24V DC**  
**2.0 W**  
**0.08A**

Product Codes and Part Numbers of manufacturers or suppliers that are other than TGL numbers are only quoted for reference and identification and do not suggest part origins or manufacturer.

**Phone: 01474 321954 Fax 01474 321988**

# Valves - General Equipment

## Other Valves

Amended 14.04.10



**Part No** VAL687 - (M/P19063)  
**Description** Plug 22mm Ind Std with Gland  
**Voltage** 12-250V AC, 12-250V DC



**Part No** VAL679 - (10223312)  
**Description** Trailer Park Valve  
**Thread** M16 x 3 Main, 1/4 BSP x 1 Exhaust incl pipe fitting  
**Bar** 10 Max  
**Working Temp** -25C to 60C

Product Codes and Part Numbers of manufacturers or suppliers that are other than TGL numbers are only quoted for reference and identification and do not suggest part origins or manufacturer.

**Phone: 01474 321954 Fax 01474 321988**