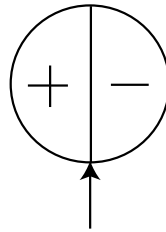


Valves - General Equipment

Rota Wink Valves

Amended 14.04.10



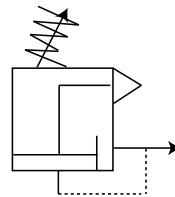
Part No VAL619 - (5VS-421-800)
Description Rota Wink Valve
 off Green/on Red
Main Threads 1/8 BSP
Bar 0.7 to 8 Max
Working Temp 2 to +66C Max

Part No VAL618 - (5VS-412-800)
Description Rota Wink Valve
 off Red/on Green
Main Threads 1/8 BSP
Bar 0.7 to 8 Max
Working Temp 2 to +66C Max



Part No VAL613 - (5VS-401-800)
Description Rota Wink Valve
 off Black/on Red
Main Threads 1/8 BSP
Bar 0.7 to 8 Max
Working Temp 2 to +66C Max

Other Valves

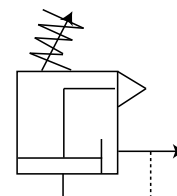


Part No VAL623 - (R73G-2GK-RMN)
Description Pressure Regulator (Relieving)
Main Threads 1/4 BSP x 2
Gauge Threads 1/8 BSP x 2
Bar 0 - 20 inlet, 0.3-10 outlet
Working Temp -34C to +80C

Part No VAL690 - (R72G-2GK-RMN)
Description Pressure Regulator (Relieving)
Main Threads 1/4 BSP x 2
Gauge Threads 1/8 BSP x 2
Bar 0 - 20 inlet, 0.3-10 outlet
Working Temp -34C to +65C



Part No VAL657 - (R07-200-RNKG)
Description Pressure Regulator (Relieving)
Main Threads 1/4 BSP x 2
Gauge 1/8 BSP x 2
Bar 0 - 20 inlet, 0.3 - 7 outlet
Working Temp -34C to +65C



Product Codes and Part Numbers of manufacturers or suppliers that are other than TGL numbers are only quoted for reference and identification and do not suggest part origins or manufacturer.

Phone: 01474 321954 Fax 01474 321988